



# **Turntable**

Model

***Muse1C***

**User manual**



*Figure 1*

- 1. Put the box into position shown by the markings on the side of the packaging. (Figure 1).**



*Figure 2*

- 2. Unbox the turntable while reading the User Manual. (Figure 2).**



*Figure 3*

- 3. Take out the top packaging layer (Figure 3).**



*Figure 4*

4. Take out the turntable platter and all the accessories except the big box. (Figure 4).



*Figure 5*

5. Take out the middle layer of packaging and big box (power supply) (Figure 5).



*Figure 6*

6. Take out the turntable and put it to a designated place close to dedicated audio equipment (Figure 6).  
**ATTENTION!** Turntable is heavy (15 kg / 55 pounds), so don't hesitate to ask your friend for help.

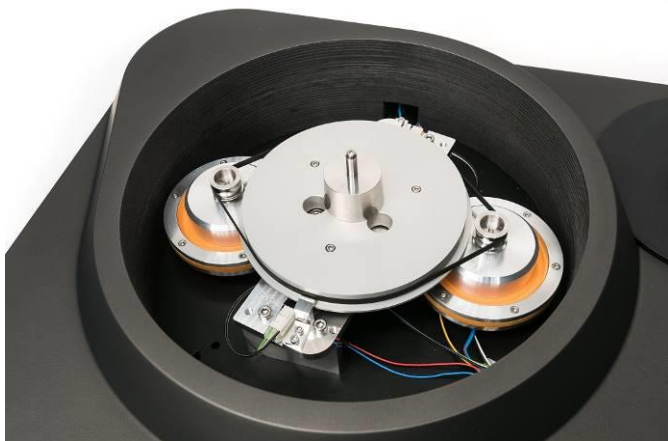


Figure 7

**7. When ordering *belt drive* option (Figure 7):**

- a) Take a belt from the box and put it on the pulleys of both motors and the drive wheel.
- b) release screws marked A, turn the red plate as it is shown in Figure 7a (to prevent it touching the disk) and tighten screws A again. You can also completely remove the red plate.

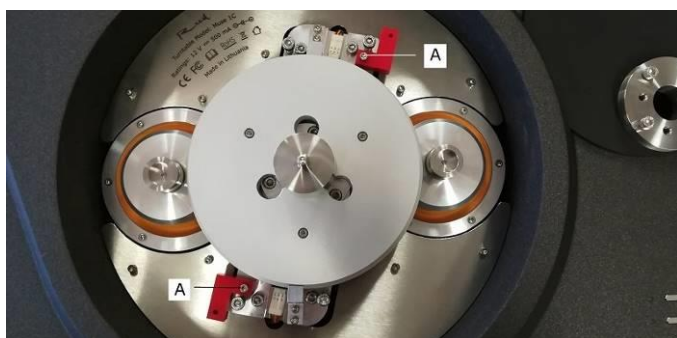


Figure 7a

**8. When ordering *friction drive* option (Figure 8),**

- a) unscrew transportation screws (with red caps) for both motors
- b) check if motor levers can move freely
- c) release screws marked A, turn the red plate as it is shown in Figure 8 (to prevent it touching the disk) and tighten screws A again. You can also completely remove the red plate.

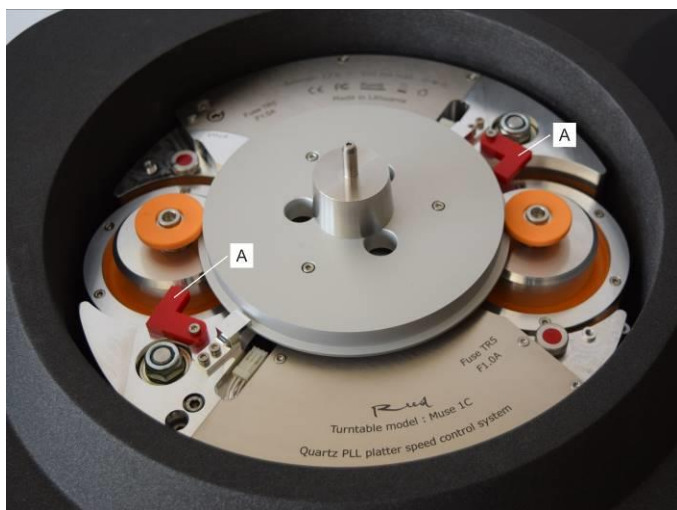


Figure 8



Figure 9

**9. Put the platter on the turntable axis (Figure 9).**



Figure 10

**10. By adjusting turntable feet up or down, set the turntable to a horizontal position (Figure 10).**

**After mounting a tonearm, please check turntable's horizontal position once again. If turntable features electronic level (inclinometer) and speed indicator, follow chapter 12a.**



Figure 11

**11. Attach power supply to a socket (Figure 11) and:**

**a) plug into a power socket:**

- 220V – 240V, 50Hz or
- 110V – 130V, 60Hz (on request).

**b) if Reed Source 12V power source is used – connect it according to instructions in *Reed Source 12V* user manual.**

**c) if you'll be using Reed 5T tonearm, you may power both tonearm and turntable from a single power source. Filtered power supply cable should be connected to a tonearm.**





Figure 12

**12. After connecting turntable to the power source red-colored LED next to 0 is turned on (Figure 12).**

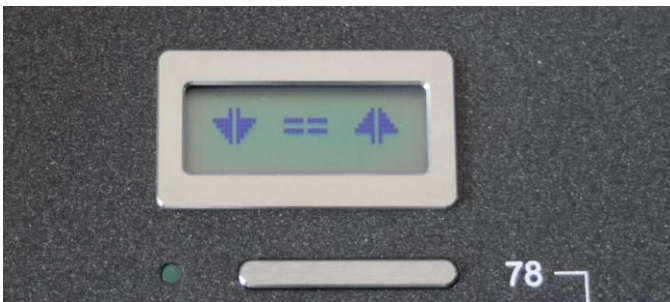


Figure 12a

**a) If turntable features electronic level (inclinometer) and speed indicator, it might show any combination of arrows and zeroes (Figure 12a). Arrows show how to adjust front feet of the turntable (pictured - left should be moved down, right should be lifted up). Turntable adjustments should be performed until only zeroes are displayed (Figure 12b).**



Figure 12b



Figure 13

**13. Turntable is turned on by pressing appropriate turntable speed button (16, 33, 45 or 78). Then red LED 0 goes off and green LED turns on next to selected speed button (Figure 13). To switch from one speed to another, please press 0 and suggested speed button. If turntable has a speed indicator, it shows actual speed of disk rotation.**

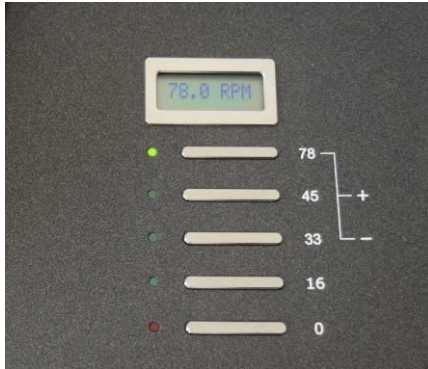


Figure 14

- 14. After choosing 78 speed (indicated by a green LED), it can be softly adjusted by pressing and holding either "+" or "-" buttons (Figure 14). Speed setting is reset after stopping the turntable. Speeds 16; 33 and 45 cannot be fine-tuned.**



Figure 15

- 15. Tonearm mounting position, depending on its length, is changed by turning (relatively to each other) two tonearm mount base discs – outer (big), which is fixed using a screw (Figure 15) and inner (small). For a screw fastening please use s=1,5mm hex (Allen) key (included).**



Figure 16

- 16. To mount tonearms with different mounting patterns, please use different inner tonearm mount base discs (small).**

**For mounting of Reed 5T tonearm, please use dedicated outer tonearm mount base discs (big) and inner tonearm mount base discs (small)(Figure 16).**



*Figure 17*

**17. Bearing lubrication (Figure 17). Lubricate bearing every half year (when you get new Reed turntable the bearing is lubricated):**

- a) Remove platter;**
- b) Unscrew screw from top of spindle. Use Torx key TX10 (included in package);**
- c) Push ball down with syringe needle and inject not more than 2 drops of oil (included in package);**
- d) To remove air from bearing: push bearing down by hand and push ball down with needle through screw hole. Do not release bearing;**
- e) Hold bearing pushed down and tighten the screw;**
- f) Put back platter on turntable.**